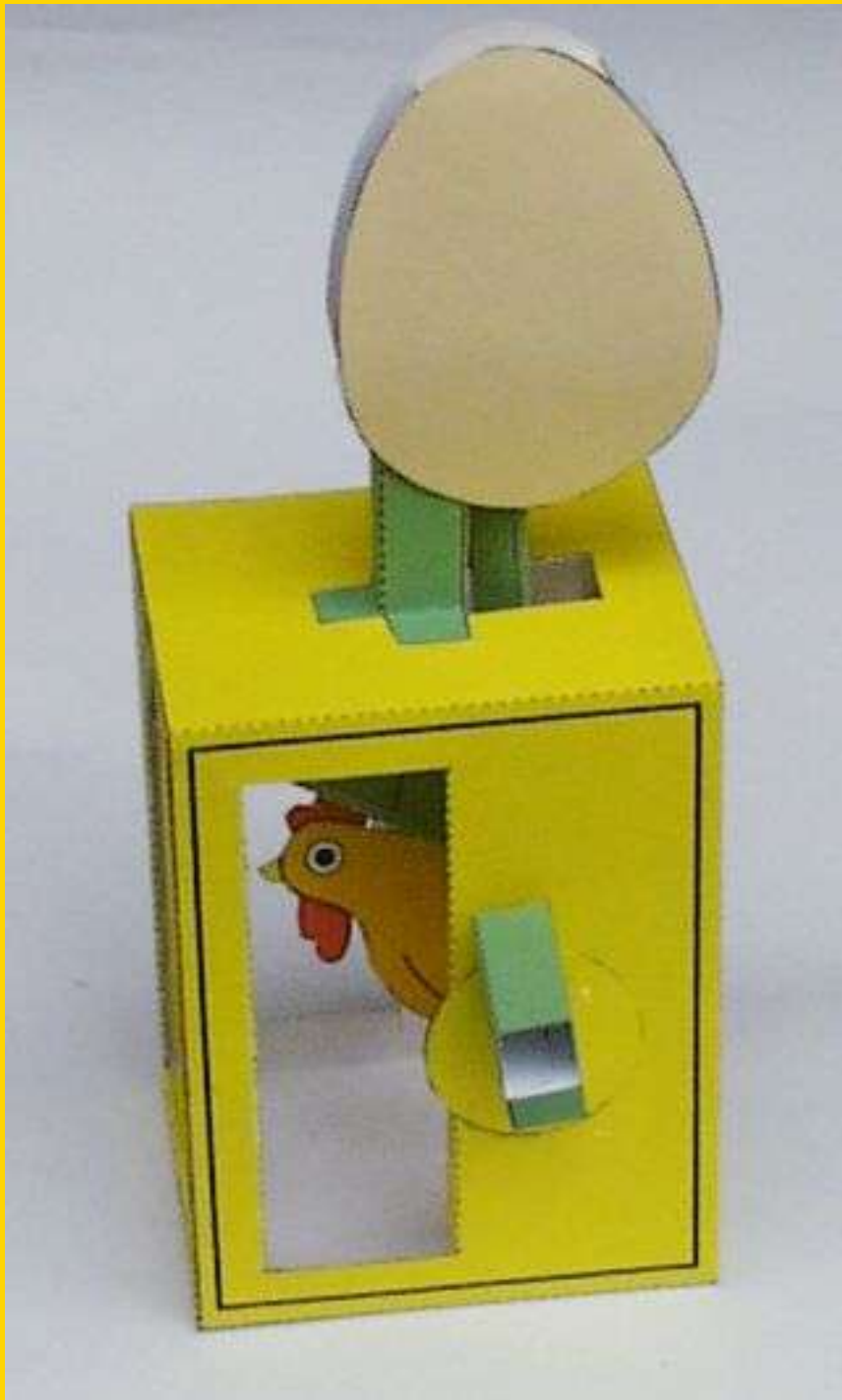
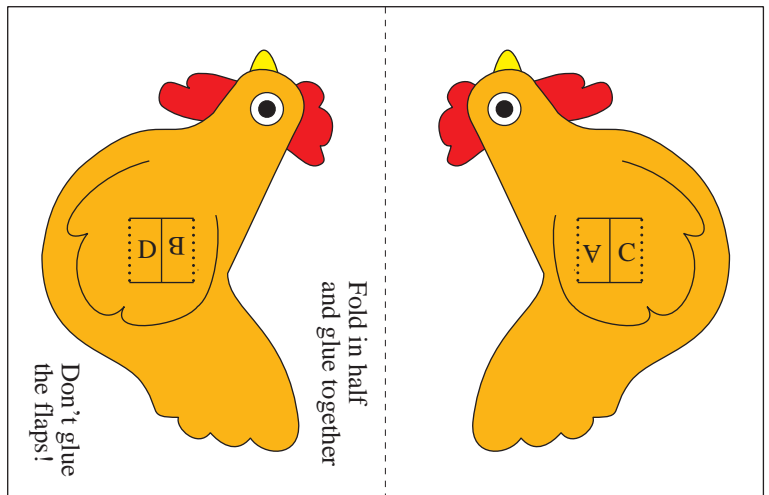
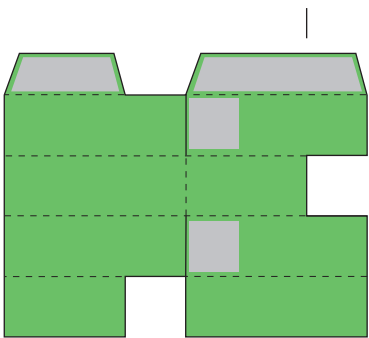
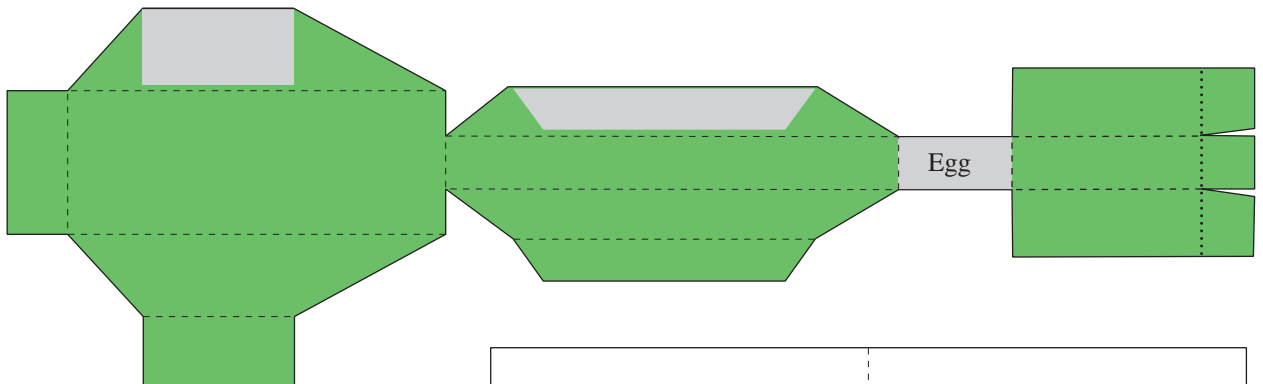
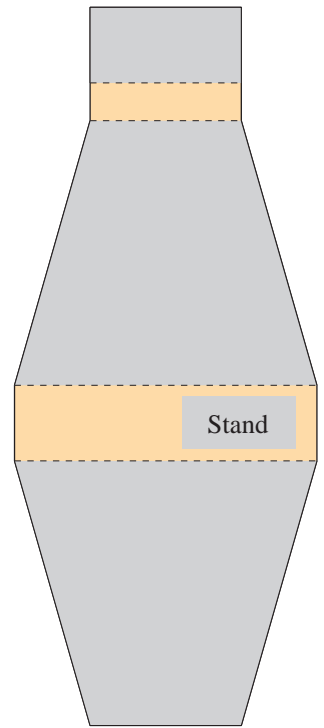
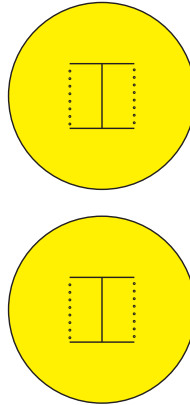
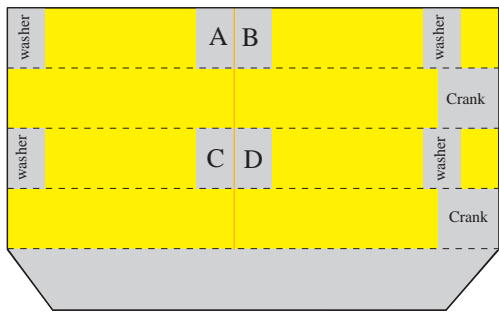
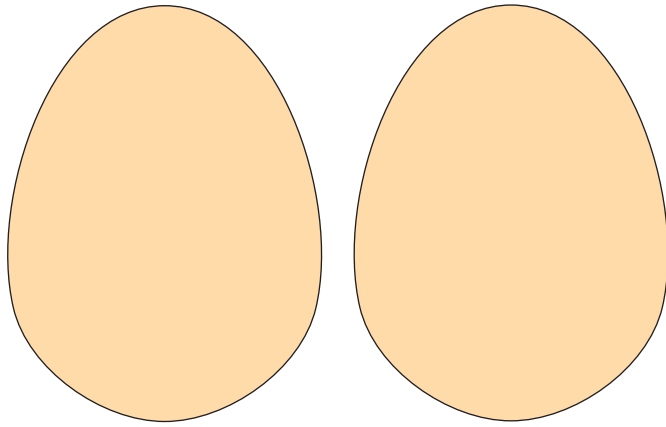
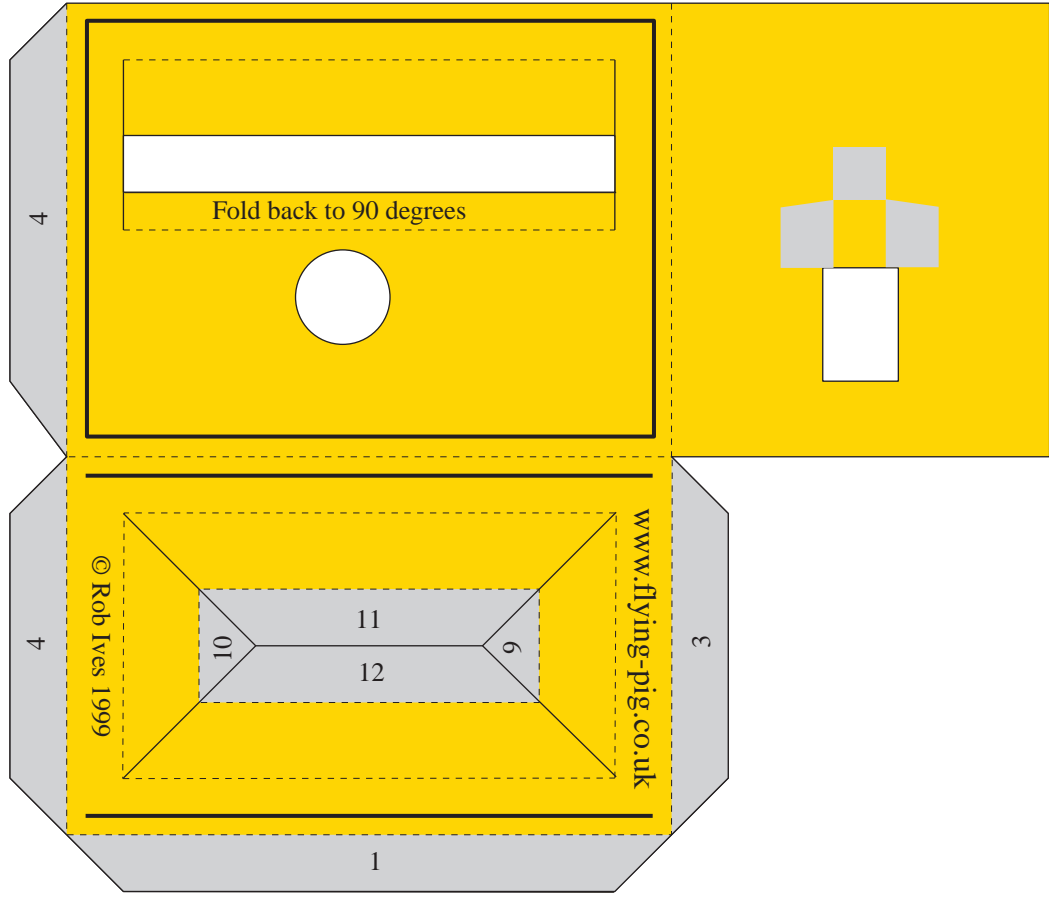
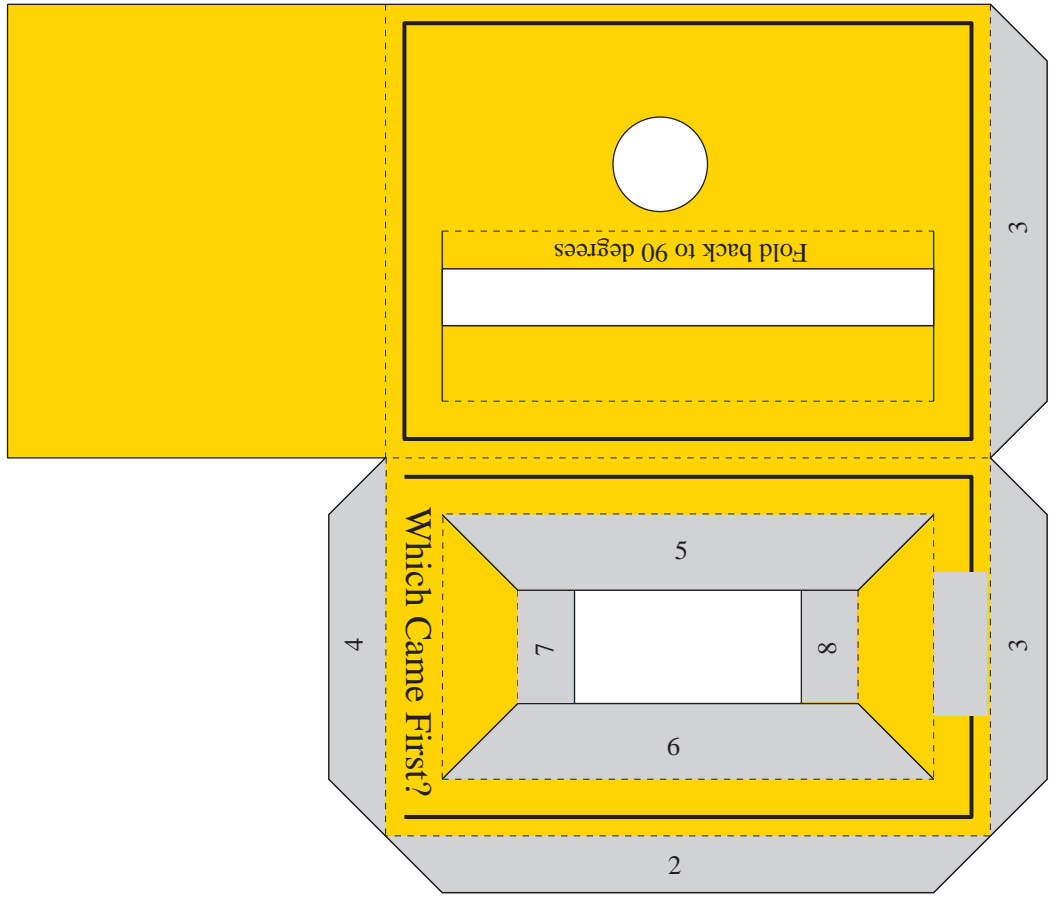


Which Came First?



An animated model to cut out and make
by Rob Ives





Instructions for Construction.

Before you start:

Score along all the dotted lines and cut out any holes with a sharp knife.

Score along all the dotted lines.

The Chicken

Cut round the rectangular area holding the chicken. Fold it in half and glue the two halves together. Leave the chicken to dry before cutting it out.

The Box and Cam

Assemble the box following the numbers 1 to 12.

Assemble the cam follower and glue it into place on the box

Glue together the three parts of the egg then glue it in place on the stand.

Assemble the crank shaft, slide the chicken into place observing the letters on the flaps and glue it into place.

Final Assembly

Fit the crank shaft and chicken in place in the box with the chicken in upright and facing the front of the box.

Glue the washers in place and assemble and glue on the crank handle.



1) Assemble the box



2) Glue in the cam follower



3) Glue on the egg



4) The assembled chicken



5) The finished model